

Coryn's Mosaic

Designed by Char Hopeman

Featuring Lisa DeBee Schiller's Coryn Collection

SIZE: 57" x 75"



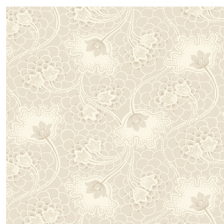
PLEASE NOTE: QUILT IMAGE SHOWN IS A DIGITAL REPRESENTATION, FABRIC LOOK MAY VARY ON YOUR PROJECT.
VISIT OUR *FREE PROJECT* SECTION ONLINE FOR ANY PATTERN UPDATES BEFORE STARTING QUILT PROJECT.



WINDHAM FABRICS

Coryn's Mosaic

Page 2



32036-18 White



41130-2 Soft Plum



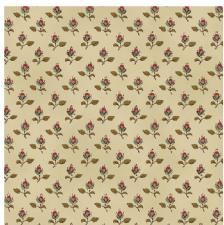
41131-3 Cream



41132-1 Soft Teal



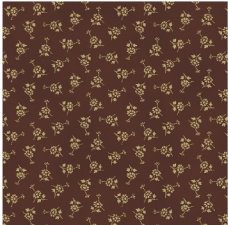
41132-5 Dark Taupe



41133-3 Cream



41133-4 Taupe



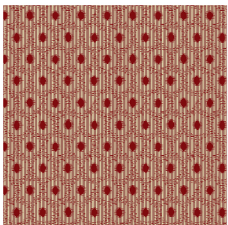
41134-2 Soft Plum



41134-6 Cranberry



41135-2 Soft Plum



41136-6 Cranberry

SKU / COLOR	YDS
32036-18 White	3/4 yd
41130-2 Soft Plum	3/4 yd
41131-3 Cream (Backing)	3 yd
41132-1 Soft Teal	3/4 yd
41132-5 Dark Taupe	1/8 yd
41133-3 Cream	1/3 yd

SKU / COLOR	YDS
41133-4 Taupe	1/2 yd
41134-2 Soft Plum	1 yd
41134-6 Cranberry	1/4 yd
41135-2 Soft Plum	1/4 yd
41136-6 Cranberry	1/2 yd

* From Mary's Blenders

Batting

INSTRUCTIONS

From fabric 32036-18 White cut 8 – 2" w strips. Cut these into 144 – 2" squares.

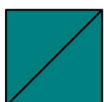
From fabric 41133-4 Taupe cut 4 – 2" w strips. Cut these into 72 – 2" squares.

From fabric 41136-6 Cranberry cut 4 – 2" w strips. Cut these into 72 – 2" squares.

Make 72 of the following four-patches.



From fabric 41132-1 Soft Teal cut 5 – 3⁷/₈" w strips. Cut these into 48 – 3⁷/₈" squares. Cut them in half diagonally.



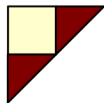
Coryn's Mosaic

Page 3

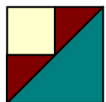
From fabric 41133-3 Cream cut 5 - 2" w strips. Cut these into 96 - 2" squares.

From fabric 41134-2 Soft Plum cut 6 - 2³/₈" w strips. Cut these into 96 - 2³/₈" squares. Cut these in half diagonally.

Sew a plum triangle to two sides of the cream square. Press the seams toward the triangles. Make 96 of these.



Sew the 96 teal triangles to the above sections. Press the seams toward the teal triangle.



From fabric 32036-18 White cut 3 - 2³/₈" w strips. Cut these into 48 - 2³/₈" squares. Draw a diagonal line on the back of these squares.

From fabric 41134-6 Cranberry Cut 3 - 2³/₈" w strips. Cut these into 48 - 2³/₈" squares.

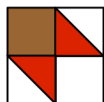
Lay the white and cranberry squares right sides together. Sew 1/4" from both sides of the drawn line. Cut on the drawn line. Press the seam toward the cranberry side. You will have 96 pieced triangles.



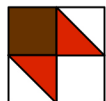
From fabric 32036-18 White cut 4 - 2" w strips. Cut these into 48 - 2" squares.

From fabric 41133-4 Taupe cut 2 - 2" w strips. Cut these into 24 - 2" squares.

Using 24 of the white squares, the 24 taupe squares and 48 of the cranberry pieced triangles make 24 of the following star-point squares.

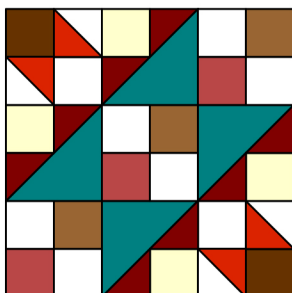
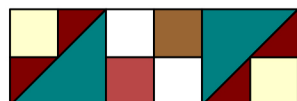
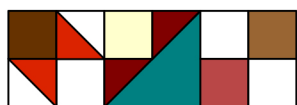


From fabric 41132-5 Dark Taupe cut 2 - 2" w strips. Cut these into 24 - 2" squares. Using the remaining 24 - 2" white squares, the dark taupe squares and the remaining 48 cranberry pieced triangles make 24 of the following star-point squares.



Assemble the blocks as follows.

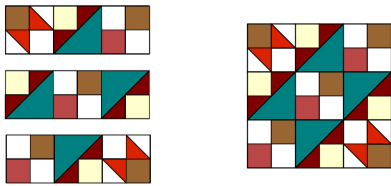
Make 12 Dark Taupe-corner blocks



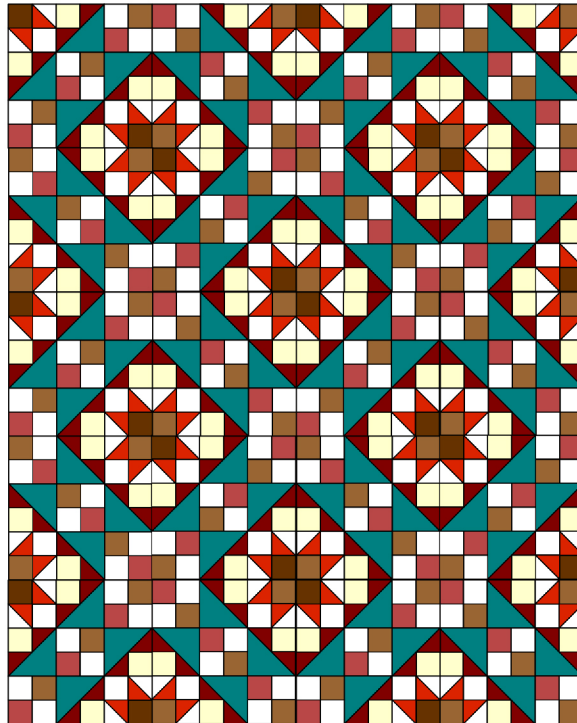
Coryn's Mosaic

Page 4

Make 12 Taupe-corner blocks



Sew the Dark Taupe-corner blocks and the Taupe-corner blocks into 6 rows of 4 blocks each, alternating dark taupe and light taupe blocks. Turn the light taupe blocks so that the teal sections create a diagonal path across the quilt.



BORDERS

Inner Border

From fabric 41135-2 Soft Plum cut 5 – $1\frac{3}{4}$ "w strips. Sew them end to end. Press the seams open. Measure the length of the quilt top. From the long strip cut two strips this length. Sew them to the sides of the quilt top. Press the seams toward the border strips. Measure the width of the quilt top. Cut two strips this length. Sew them to the top and bottom. Press as before.

Outer Border

From fabric 41130-2 Soft Plum cut 6 – $4\frac{1}{2}$ "w strips. Sew them into one long strip. Measure, cut and sew as you did for the Inner border. Press as before.

FINISHING

Piece the backing fabric. Press the seam open being sure to remove any selvages. Layer the backgin, batting and quilt top. Baste and quilt as desired.

From fabric 41134-2 Soft Plum cut 6 – $2\frac{1}{4}$ "w strips. Sew them into one long strip. Bind your quilt. Enjoy!